

## CONTENTS

### EDITOR'S NOTE

- 1 Letter from the new *GIE* Editor-in-Chief**  
D. G. Adler

### SYSTEMATIC REVIEW AND META-ANALYSIS

- 2 Outcomes of upper endoscopy screening in Lynch syndrome: a meta-analysis**  
S. Vedantam, B. W. Katona, D. A. Sussman,  
S. Kumar

### ORIGINAL ARTICLES: Clinical Endoscopy

- 11 Comparison of endoscopic sleeve gastropasty versus surgical sleeve gastrectomy: a Metabolic and Bariatric Surgery Accreditation and Quality Improvement Program database analysis**

A. R. Gudur, C. X. Geng, S. Kshatri, D. Martin,  
R. Haug, M. Radlinski, Y. Lei, R. C. D. Buerlein,  
D. S. Strand, B. G. Sauer, V. M. Shami,  
P. Hallowell, B. Schirmer, A. Y. Wang, A. Podboy

- 22 Is endoscopic sleeve gastropasty ready for prime time?**

A. M. Rogers, E. M. Pauli

- 25 Incidence and natural history of gastric high-grade dysplasia in patients with familial adenomatous polyposis syndrome**

M. DelSignore, T. Jeong, G. Denmark,  
D. Feldman, A. Shih, L. Zukerberg, D. C. Chung

- 35 Comparative accuracy of endosonographic shear wave elastography and transcutaneous liver stiffness measurement: a pilot study**

D. R. Kohli, D. Mettman, N. Andraws, E. Haer,  
J. Porter, O. Ulusurac, S. Ullery, M. Desai,  
M. S. Siddiqui, P. Sharma

- 42 Scheduled endoscopic treatment of biliary anastomotic and nonanastomotic strictures after orthotopic liver transplantation**

C. C. Zhang, C. Rupp, X. Exarchos, A. Mehrabi,  
R. Koschny, A. Schaible, P. Sauer

- 50 Targeted next-generation sequencing of EUS-guided through-the-needle-biopsy sampling from pancreatic cystic lesions**

C. V. Rift, L. C. Melchior, B. Kovacevic, P. Klausen,  
A. Toxværd, H. Grossjohann, J. G. Karstensen,  
L. Brink, H. Hassan, E. Kalaitzakis, J. Storkholm,  
D. Scheie, C. P. Hansen, E. L. Lund, P. Vilmann,  
J. P. Hasselby

- 59 Genotype-phenotype correlation of small-intestinal polyps on small-bowel capsule endoscopy in familial adenomatous polyposis**

G. Fukushi, M. Yamada, Y. Kakugawa, M. Gotoh,  
N. Tanabe, M. Ushiyama, T. Watanabe, T. Yamazaki,  
M. Matsumoto, M. Hirata, T. Nakajima, K. Sugano,  
T. Yoshida, T. Matsuda, Y. Igarashi, Y. Saito

- 69 Development of ileal adenomas after ileal pouch-anal anastomosis versus end ileostomy in patients with familial adenomatous polyposis**

A. S. Aelvoet, V. H. Roos, B. A. J. Bastiaansen,  
R. Hompes, W. A. Bemelman, C. M. Aalfs,  
P. M. M. Bossuyt, E. Dekker

- 78 NBI International Colorectal Endoscopic-derived high-confidence optical diagnosis of small polyps compared with histology: understanding errors to improve diagnostic accuracy**

A. Ahmad, M. Moorghen, A. Wilson, B. P. Saunders

- 89 Timing of colonoscopy in acute lower GI bleeding: a multicenter retrospective cohort study**

Y. Shiratori, N. Ishii, T. Aoki, K. Kobayashi,  
A. Yamauchi, A. Yamada, J. Omori, T. Aoyama,  
N. Tominaga, Y. Sato, T. Kishino, T. Sawada,  
M. Murata, A. Takao, K. Mizukami, K. Kinjo,  
S. Fujimori, T. Uotani, M. Fujita, H. Sato, S. Suzuki,  
T. Narasaka, J. Hayasaka, T. Funabiki, Y. Kinjo,  
A. Mizuki, S. Kiyotoki, T. Mikami, R. Gushima,  
H. Fujii, Y. Fuyuno, N. Gunji, Y. Toya,  
K. Narimatsu, N. Manabe, K. Nagaike, T. Kinjo,  
Y. Sumida, S. Funakoshi, K. Kobayashi,  
T. Matsuhashi, Y. Komaki, K. Miki, K. Watanabe,  
K. Yamamoto, T. Yoshimoto, A. Takasu, T. Ikeya,  
F. Omata, K. Fukuda, M. Kaise, N. Nagata

- 100 Endocytoscopy for assessing histologic inflammation in ulcerative colitis: development and prospective validation of the ELECT (ErLangen Endocytoscopy in ColiTiS) score (with videos)**

F. Vitali, N. Morgenstern, M. Eckstein, R. Atreya,  
M. Waldner, A. Hartmann, M. F. Neurath, T. Rath

- 112 Second-generation distal attachment cuff for adenoma detection in screening colonoscopy: a randomized multicenter study**

K. Zimmermann-Fraedrich, S. Sehner, T. Rösch,  
J. Aschenbeck, A. Schröder, S. Schubert, T. Liceni,  
A. Aminalai, W. Spitz, U. Möhler, F. Heller,  
R. Berndt, C. Bartel-Kowalski, K. Niemax,  
W. Burmeister, G. Schachschal

- 121 Validation of a natural language processing algorithm to identify adenomas and measure adenoma detection rates across a health system: a population-level study**

J. Tinmouth, D. Swain, K. Chorneyko, V. Lee,  
B. Bowes, Y. Li, J. Gao, D. Morgan

- 130 Monitoring colonoscopy screening program quality at the provider level, the institution level, and beyond**

J. Melson

Editorial

Editorial



**NEW METHODS: Clinical Endoscopy**

**132 Covered versus uncovered double bare self-expandable metal stent for palliation of unresectable extrahepatic malignant biliary obstruction: a randomized controlled multicenter trial**

S. W. Park, K. J. Lee, M. J. Chung, J. H. Jo, H. S. Lee, J. Y. Park, S. W. Park, S. Y. Song, H. Kang, E. J. Kim, Y. S. Kim, J. H. Cho, S. Bang

**AT THE FOCAL POINT**

**143 Does the endoscopic view reflect the size of the gastric varix?**

Y. M. Naga, M. Wahba, A. H. K. Abdelmaksoud, M. Naga

**144 Unelicited pressure: dynamic physiologic distention of a choledochocoele visualized endosonographically**

F. Bazerbachi, N. Nassani, M. Sharma

**146 The usefulness of texture and color-enhanced imaging for balloon endoscopy-assisted ERCP for hepatic-jejunal anastomotic stenosis**

M. Takenaka, S. Omoto, T. Fukunaga, M. Kudo



**147 Everted diverticula with endoscopic mucosal changes mimicking serrated lesions (with video)**

D. K. Rex, R. E. Lahr, J. Lin



**LETTERS TO THE EDITOR**

**149 The potential role of artificial intelligence besides predicting gastric cancer invasion depth**

H. Yang, L. Guan, B. Hu

**149 Gastric juice accelerates liquefaction of pancreatic necrosis**

L. Gao, X. Xiao, L. Ke, J. Hong, L. Brown, A. Phillips, J. A. Windsor

**150 Response**

B. P. Mohan

**151 Limitations in endoscopic sleeve gastropasty outcomes data derived from surgery-based repositories**

F. Bazerbachi, B. K. Abu Dayyeh, M. G. Neto, I. Boškoski, V. Bove

**152 Response**

A. R. Gudur, C. Geng, A. Y. Wang, A. Podboy

**READER SERVICES**

**9A From the December issue of *VideoGIE***

**10A Focus On**

**11A ASGE Update**

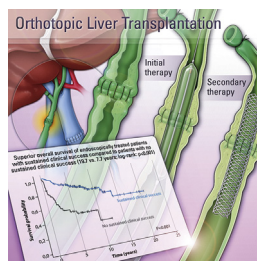
**12A In Upcoming Issues**

**14A In the current issue of *Endoscopy***

**15A Information for Readers**

**17A Instructions for Authors**

**The cover**



From “Scheduled endoscopic treatment of biliary anastomotic and nonanastomotic strictures after orthotopic liver transplantation,” by Chengcheng Christine Zhang, et al (p. 42-9).

Instructions for authors are available online at [www.giejournal.org](http://www.giejournal.org) and <https://www.editorialmanager.com/gie> and should be consulted before submission.









Full-text online access to *Gastrointestinal Endoscopy* is now available for all print subscribers. See page 24 for details.

 **Online Audio and Podcasting**

Audio and Podcasts of article abstracts published in *Gastrointestinal Endoscopy* are now available online. Recordings are performed by Deborah Bowman, MFA, ELS.

Scan the QR code or log on to [www.giejournal.org](http://www.giejournal.org) to listen to recordings from the current issue.



- |   |                                 |
|---|---------------------------------|
|    | Commentary on preceding article |
|    | CME examination article         |
|    | Online component                |
|    | Online video                    |
|   | Online audio                    |
|  | Author interview series         |
|  | Fast Track article              |
|  | QR code                         |